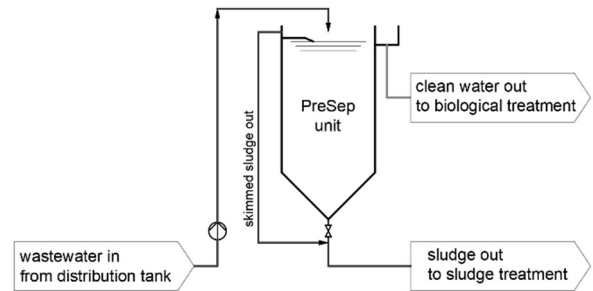
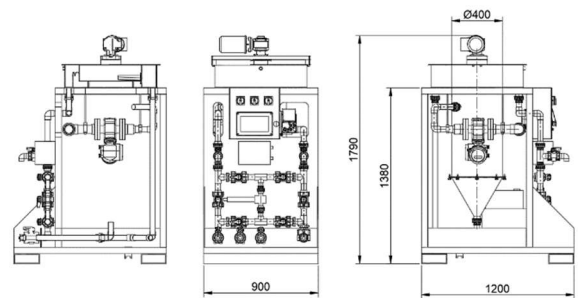


MUST | PreSep^[trial] – Pre-clarifying Unit

EN | February 2021



Process scheme of the PreSep^[trial]



Dimensions of the PreSep^[trial]



Test setup at the sand trap



Transport with hand pallet truck

Space requirement for the setup of the tests are approx. 2x3 m as well as the respective access for the extraction of wastewater with a submersible pump at:

- Sand trap
- Grease / fat trap
- Pre-sedimentation basin/tank



Ability to analyze in the laboratory like:

- Settable substances (Imhoff funnel)
- Filterable substances
- COD – cuvette tests
- ...

